



PAUL ENGINEERING INC.

SOLVING AMERICA'S ENGINEERING NEEDS



School Facilities

Bay Area Christian School

Client

Bay Area Christian School

Location

League City, Texas

Size

20,800 sf

Construction Date

2010

Construction Cost

\$2,000,000

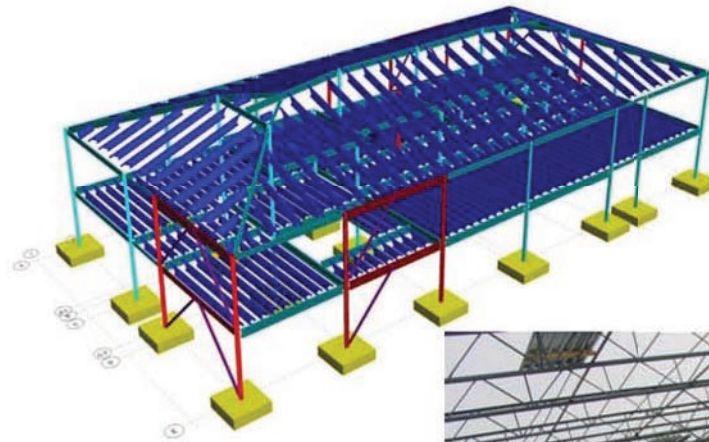
Architect

Randall Porterfield
Architects

Project Description

This project involved a two-story steel structure with a mechanical mezzanine between 2nd

floor and roof. The building will have 14 classrooms and office space.



PAUL ENGINEERING INC
SOLVING AMERICA'S ENGINEERING NEEDS

626 ½ Barringer Lane
Webster, TX 77598
Phone: 281-280-9972
www.paulengineering.com
Solving America's Engineering Needs